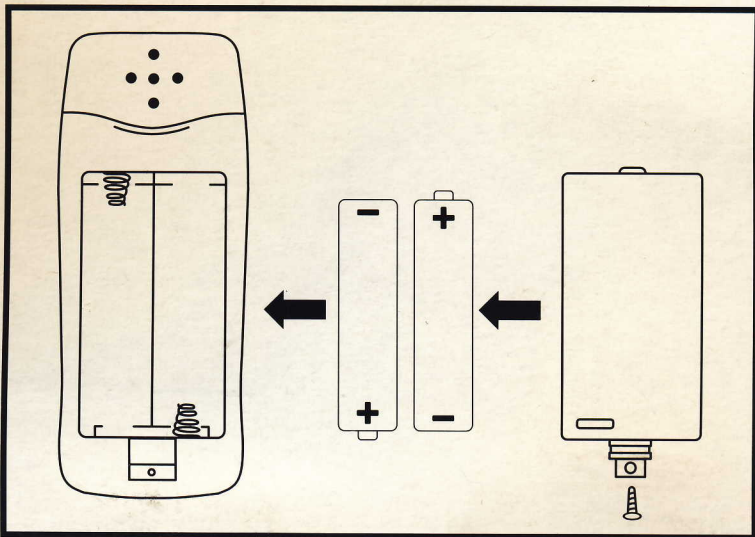


BATTERY REPLACEMENT



INSTALL, REPLACE OR REMOVE BATTERIES:
Remove screw and battery compartment cover and install, replace or remove 2AA BATTERIES as necessary following the position indicated. Replace the battery compartment cover and screw.



WARNING:

This product contains 2AA BATTERIES.
Replacement of batteries should be done by an adult.
Do not mix old batteries and new batteries.
Do not mix alkaline, standard or rechargeable batteries.
Do not dispose of batteries in fire, batteries may explode or leak.
Do not attempt to open battery outer casing.

ATTENTION: The batteries included in this unit are also intended for in-store demonstration. It is possible that the batteries may become weak or discharged prior to purchase and customer may find it necessary to replace the included batteries with fresh cells to ensure proper operation.

READ INSTRUCTIONS CAREFULLY BEFORE INSERTING OR REPLACING BATTERIES.

REPLACEMENT OF BATTERIES SHOULD BE DONE BY AN ADULT. SWITCH TOY OFF BEFORE INSERTING OR REPLACING BATTERIES. NON-RECHARGEABLE BATTERIES ARE NOT TO BE RECHARGED. RECHARGEABLE BATTERIES ARE TO BE REMOVED FROM THE TOY BEFORE RECHARGING.

RECHARGEABLE BATTERIES ARE ONLY TO BE CHARGED UNDER ADULT SUPERVISION. DIFFERENT TYPES OF BATTERIES OR NEW AND USED BATTERIES ARE NOT TO BE MIXED.

ONLY BATTERIES OF THE SAME OR EQUIVALENT TYPE AS RECOMMENDED ARE TO BE USED.

BATTERIES ARE TO BE INSERTED WITH THE CORRECT POLARITY. EXHAUSTED BATTERIES ARE TO BE REMOVED FROM THE TOY. THE SUPPLY TERMINALS ARE NOT TO BE SHORT-CIRCUITED. ATTENTION TO PARENTS : ANY BATTERY CHARGER TO BE USED WITH THE TOY SHOULD BE REGULARLY EXAMINED FOR POTENTIAL HAZARDS, SUCH AS DAMAGE TO THE CABLE OR CORD, PLUG, ENCLOSURE OR OTHER PARTS, AND THAT, IN THE EVENT OF SUCH DAMAGE, THE TOY MUST NOT BE USED UNTIL THAT DAMAGE HAS BEEN PROPERLY REMOVED.

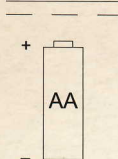
BATTERIES ARE HARMFUL IF SWALLOWED, SO KEEP AWAY FROM YOUNG CHILDREN. PLEASE RETAIN THIS PACKAGING FOR FUTURE REFERENCE.



PULL TAG HERE!

P.O. NO. 84880

CHECK OUT OUR WEBSITE:
imperialtoy.com



0.09 W

2 X 1.5 V
= 3 V